



# KRUGER TO CAPE ESCAPE

A SPECTACULAR 'BIG-5' AFRICAN SAFARI COUPLED WITH A VIBRANT CITY & SCENIC COASTAL GETAWAY

8 NIGHT PACKAGE – SOUTH AFRICA

3 NTS EAGLE OWL | 3 NTS CAPE TOWN HOLLOW | 2 NTS KNYSNA HOLLOW

*Experience the best of spectacular South Africa on this unique package catering for up to 8 people making it ideal for family and friends...*

Excellent game viewing, hearty bush cuisine, luxury accommodation and outstanding bush hospitality awaits you at Eagle Owl in the heart of Africa... Here big game abounds; each day bringing something different whilst exploring the endless fascination of Africa's wildlife.

From the breathtaking bush you are whisked off to the ultimate cosmopolitan African city – Cape Town – voted one of the most beautiful destinations to visit in the world. Boasting iconic landmarks (including spectacular winelands, imposing mountains and rugged peninsulas), beautiful beaches and noteworthy restaurants, bustling Cape Town and its surrounds have something to offer everyone.

After exploring the magnificent Cape enjoy a scenic coastal road trip through the famous Garden Route to Knysna which is the ideal base from which to explore the myriad of attractions the region has to offer. Beautiful salt-water estuaries and sandy Indian Ocean beaches frame one side of Knysna and the Garden Route while the other side consists of wild, indigenous forests and beautiful, rugged mountains which form a backdrop to exciting activities and adventures on offer.

*The perfect escape, this great combo package offers a truly memorable experience that can be shared with loved ones.*





## EAGLE OWL

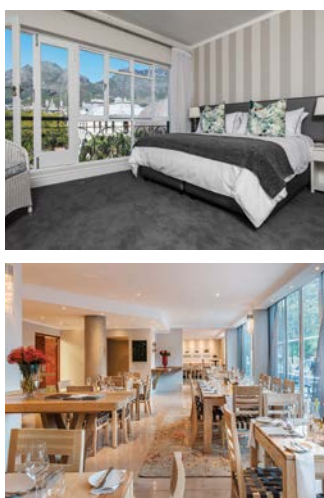
TIMBAVATI PRIVATE NATURE RESERVE  
GREATER KRUGER NATIONAL PARK

Overlooking the banks of the Machatane River, Eagle Owl offers a private bush experience. The camp has 4 luxury en-suite chalets each with a private deck, and a fully-equipped open plan kitchen, bar/lounge area with TV, a fire pit overlooking the river, an enclosed boma and a pool.

Here you choose the pace of your safari and daily cleaning staff, as well as a personal cook allow you the time to relax and soak up the African bush.

Experience two daily game drives with a qualified ranger & tracker traversing 12 000 hectare of game rich terrain with regular 'Big-5' sightings as well as general game and birdlife.

[www.eagleowlcamp.co.za](http://www.eagleowlcamp.co.za)



## CAPE TOWN HOLLOW BOUTIQUE HOTEL

CAPE TOWN | CITY CENTRE

Set in the heart of Cape Town, in the shadow of Table Mountain, Cape Town Hollow overlooks the lush historic Company's Gardens.

The air-conditioned rooms with stunning mountain views include complimentary Wi-Fi and the finest amenities, as well as charming Juliet balconies. Dine at Eighty Ate, the Hotels à la carte restaurant which offers an eclectic all-day menu enjoyed in a sidewalk café atmosphere, or relax with a sundowner in the bar or at the pool. Transfers & tours can be organised through our friendly concierge as well as a complimentary shuttle service to the V&A Waterfront.

[www.capetownhollow.co.za](http://www.capetownhollow.co.za)



## KNYSNA HOLLOW COUNTRY ESTATE

KNYSNA | GARDEN ROUTE

Set on a lush 3-hectare estate, the 4-star Knysna Hollow has been completely re-invented as an upmarket, full-service hotel on the outskirts of Knysna.

The 44 luxurious Garden Suites are set in indigenous gardens around two sparkling pools. They are decorated in a clean, contemporary style with private garden-facing verandahs and offer all modern in-room amenities including air-conditioning, satellite TV, Nespresso® stations, king-size beds and complimentary Wi-Fi. The Manor House is the focal point with the restaurant and bar areas opening onto verandahs with tranquil garden views.

[www.knysnahollow.co.za](http://www.knysnahollow.co.za)

### ROUTING: FLIGHTS, TRANSFERS & ACCOMMODATION (COULD DO EITHER DIRECTION):

- **Flight:** Johannesburg (or Cape Town) – Hoedspruit Airport HDS (**Excluded** – client to book).
- **Road Transfer:** HDS – Eagle Owl return (**Included**).
- **Accommodation:** Eagle Owl Private Camp Timbavati x 3 nights (**Included** – as well as a game ranger and tracker, game vehicle, 2 game drives daily and bush catering – brunch, high tea and dinner).
- **Flight:** HDS - Cape Town CPT (**Excluded** – client to book).
- **Airport Transfer:** CPT – Cape Town Hollow (**Included**).
- **Accommodation:** Cape Town Hollow Mountain Facing x 3 nights on a B&B basis (**Included**).
- **Road Transfer:** Cape Town – Knysna (**Included**).
- **Accommodation:** Knysna Hollow Garden Suite x 2 nights on a B&B basis (**Included**).
- **Road Transfer:** Knysna – George Airport GRJ (**Included**).

### INCLUSIONS & EXCLUSIONS:

- Please take note of flight exclusions in the above routing.
- Includes all meals specified. Excludes all beverages.
- Excludes telephone calls, gratuities, additional activities, laundry and items of a personal nature.
- Conservation levies and park entry fees for Eagle Owl.

### 2019 RACK PACKAGE PRICE

VALID: 01 October 2018 – 31 December 2019

	SEASON	TRANSPORT (NETT)	ACCOMMODATION (RACK)	TOTAL
HIGH	01 Oct – 30 Apr 01 Sep – 31 Dec	R 22 940	R 217 060	R 240 000
LOW	01 May – 30 Aug	R 19 860	R 185 140	R 205 000

THE PRICES ABOVE ARE A PACKAGE RATE FOR 8 PEOPLE SHARING & INCLUDE 15% VAT.  
THE EAGLE OWL PORTION IS BASED ON A FULL CAMP, HOWEVER SHOULD THERE BE FEWER PEOPLE THE RATE AT KNYSNA HOLLOW & CAPE TOWN HOLLOW CAN BE REDUCED.  
THE INCLUDED TRANSFER RATES ARE NETT AND NON-COMMISSIONABLE.

- Package rates are non-combinable with existing special offers.
- Accommodation rates are subject to change without prior notice.
- Terms & Conditions apply.

For further information, or to book this amazing package, please contact our Central Reservations  
on Tel: +27(0)13 750 0943 / +27(0)63 026 4041 or [lodgereservations@seasonsinfrica.com](mailto:lodgereservations@seasonsinfrica.com)

*Seasons in Africa*  
ADVENTURES • HOTELS • LODGES

[www.seasonsinfrica.com](http://www.seasonsinfrica.com)